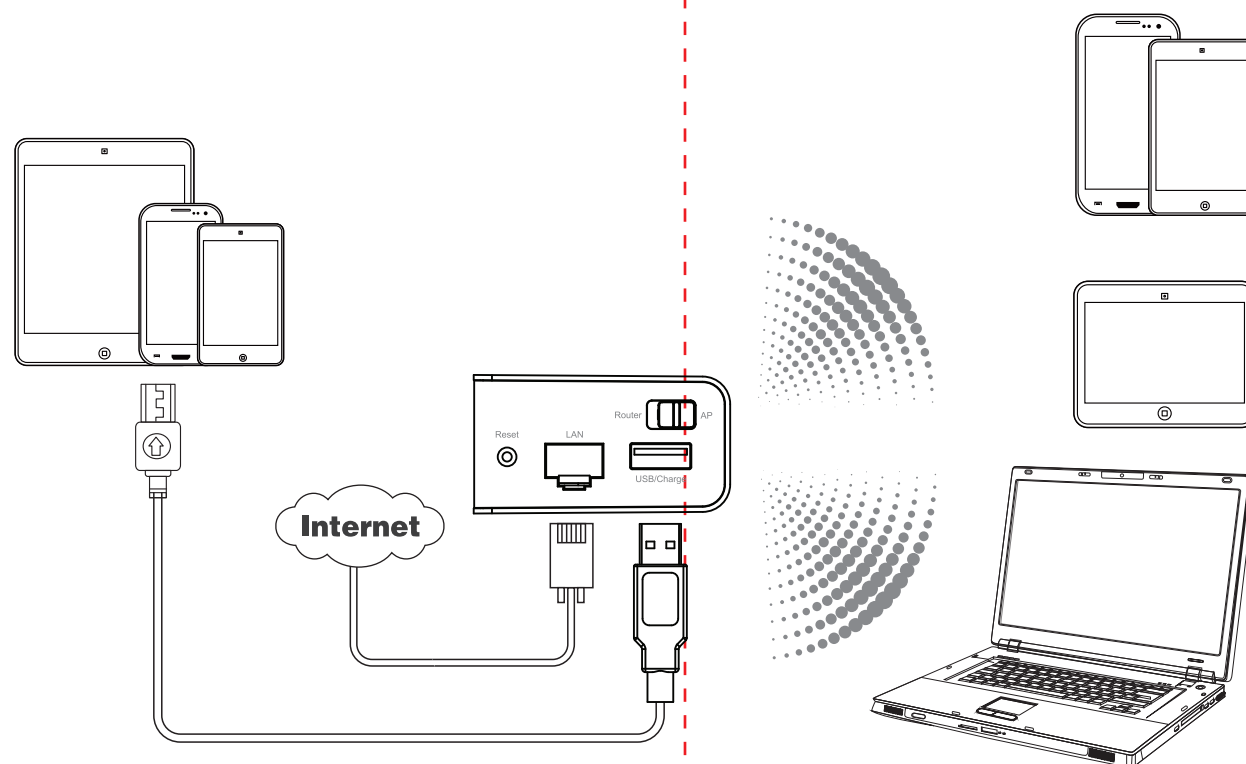


## Quick Installation Guide

150Mbps Wireless N Portable AP

Copyrights 2013 by TOTOLINK All rights reserved. Website: <http://www.totolink.net>  
Information in this document is subject to change without prior notice.

# 1 Hardware Installation



Please check following detailed description of all ports and LED indicator to build correct connection.

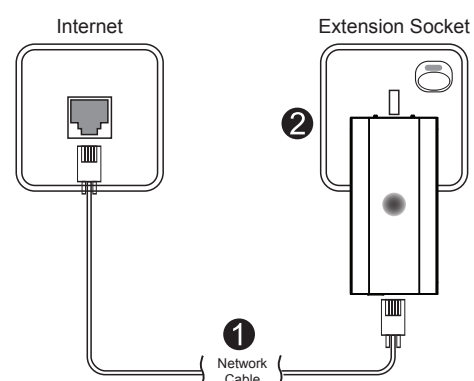
Port & LED	Description
Reset	With iPuppy powered on, press and hold the button for 8-10 seconds until the inner LED becomes solid lighting for 3-5 seconds. Then release the button and wait the AP to reboot to its factory default settings.
USB/Charge	Supply power for smart phone or pad.
LAN	This port connects the AP to Internet.
Router/AP	This slide switch allows users to change device working mode between Router & AP.
Status	There is one LED indicator named Status inside iPuppy without label on outer case. But users can see it blinking blue when it is powered on.

• The default Network Name (SSID): TOTOLINK iPuppy

## 2 Working Modes

### AP Mode

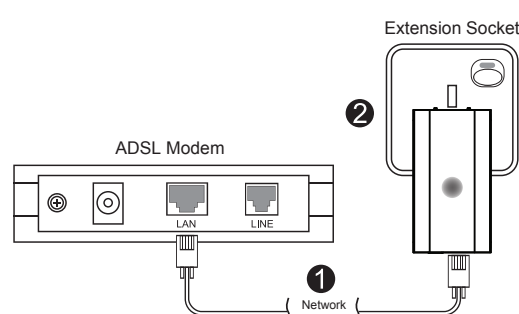
In this mode, you can access Internet by just two steps.



- 1 Plug existing network cable into the LAN port of iPuppy.
  - 2 Plug iPuppy into power socket.
- Now, you can search for the SSID of iPuppy and enter the password to access Internet. Generally, this mode is applied in hotels, restaurants and small offices.

### Router Mode

This mode makes iPuppy work like a wireless router. It supports three methods to access Internet: DHCP/PPPoE/Static IP. For example, if you can connect Internet by modem, you will have to:



- 1 Connect your Modem and iPuppy using network cable.
- 2 Plug iPuppy into power socket.
- 3 Go to Setup interface of this device to make it connect Internet successfully (Please refer to Section 3 Configure Router).

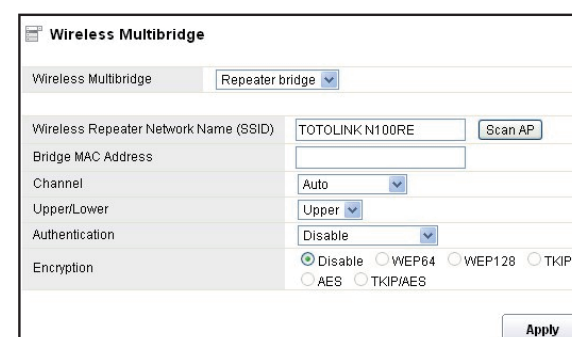
After correct configuration, you can search for the SSID and enter the password to access Internet. This mode is mostly applied at home and in student hostels.

**NOTE:** If you want to change the SSID and password of this device, you must connect to it in Router Mode (Please refer to Part 3-6).

### Repeater

This function allows iPuppy to get wireless signals from other router or AP. Sometimes, the wireless signal your PC gets is very weak because of distance. Then you can use the repeater of iPuppy to solve this problem. Please follow below steps to setup repeater function:

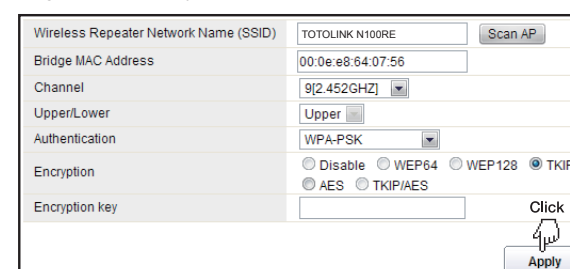
- 1 Plug iPuppy into power socket.
- 2 Login to Setup interface of this device to make it connect Internet successfully (Please refer to Section 3 Configure Router).
- 3 Go to Wireless—Wireless Multibridge to set your repeater parameters. See below:



- 4 Click Scan AP, it will pop up a window requiring you to choose one Repeater Network Name.

Channel	SSID	BSSID	Authentication Type	RSSI	Mode
9	TOTOLINK N100RE	00:0e:84:07:56	WPA2-PSK/TKIP	72%	11b/g
9	ipbbs-680504	00:0b:8c:0c:33:02	WEP/OPEN	84%	11b/gn

- 5 Choose the right one and click Select AP. It will turn back to Multibridge page which shows you some information of this SSID:



- 6 Then you can set the encryption for this connection and click Apply to make the repeater operation work.

## 3 Configure Router

Please set up the router following the below steps.

- 1 Run the Web browser.



Click

- 2 Type 192.168.1.1 in the Web browser address bar, then press Enter.

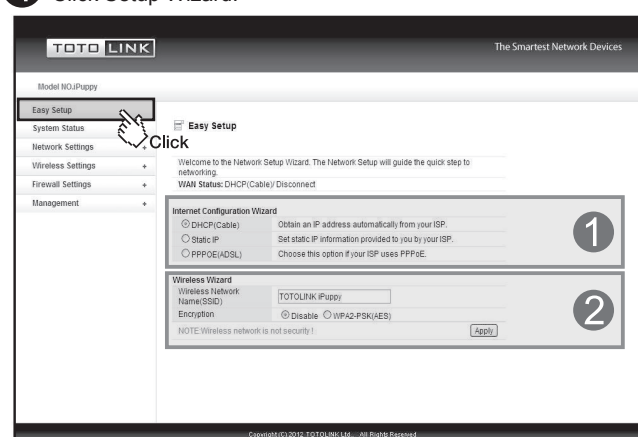


- 3 Input User Name and Password, then click "Log In". (the default User Name and Password are "admin".)



Click

- 4 Click Setup Wizard.



- 1 Internet Configuration Wizard.

Internet Access Mode	Parameters that provided by ISP (Service Provider)
A DHCP(Cable)	ISPs do not provide any parameters, you can access Internet without router, no need set up the PC.
B Static IP	Fixed IP address, Subnet mask, Default gateway and DNS server
C PPPoE(ADSL)	User name & Password.

- A DHCP (you don't need to do any configuration.)

Internet Configuration Wizard	
<input checked="" type="radio"/> DHCP(Cable)	Obtain an IP address automatically from your ISP.
<input type="radio"/> Static IP	Set static IP information provided to you by your ISP.
<input type="radio"/> PPPoE(ADSL)	Choose this option if your ISP uses PPPoE.

- B Static IP

Internet Configuration Wizard	
<input type="radio"/> DHCP(Cable)	Obtain an IP address automatically from your ISP.
<input checked="" type="radio"/> Static IP	Set static IP information provided to you by your ISP.
<input type="radio"/> PPPoE(ADSL)	Choose this option if your ISP uses PPPoE.
WAN IP	
Subnet Mask	
Default Gateway	
Primary DNS	

- C PPPoE

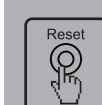
Internet Configuration Wizard	
<input type="radio"/> DHCP(Cable)	Obtain an IP address automatically from your ISP.
<input type="radio"/> Static IP	Set static IP information provided to you by your ISP.
<input checked="" type="radio"/> PPPoE(ADSL)	Choose this option if your ISP uses PPPoE.
User Name	
Password	

- 2 For a secure connection, WPA2-PSK is recommended for you to protect your network.



### NOTE:

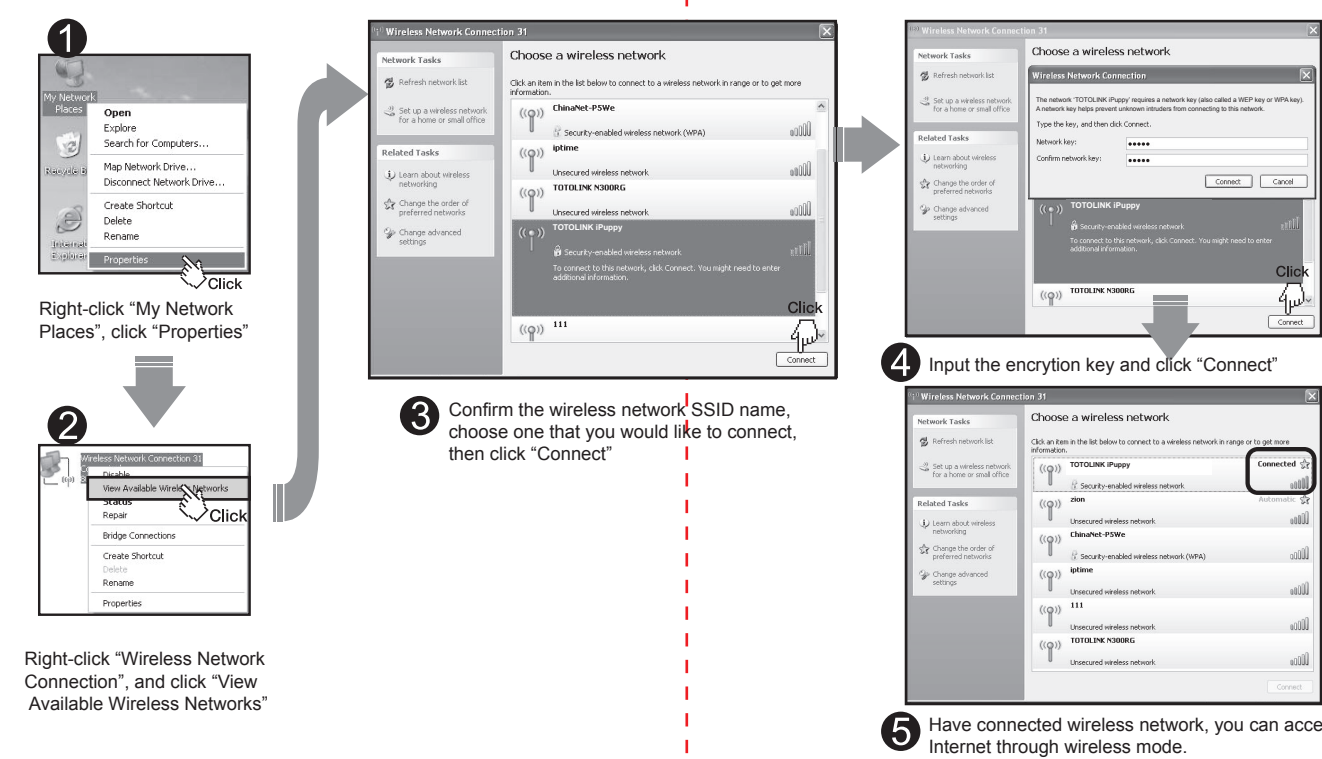
After you set the Encryption key, please remember your Network Name (SSID) and the Encryption key to connect with your wireless LAN.



With iPuppy powered on, press and hold the button until the inner LED indicator becomes solid lighting for 2-3 seconds. Then release the button and wait the AP to reboot to its factory default settings.

## 4 Wireless Network Connection

### PC connect to iPuppy



### Android Phone connect to iPuppy



### iPhone connect to iPuppy

